



SOLD

**CHECK
THE
ZONING
BEFORE
CLOSING**

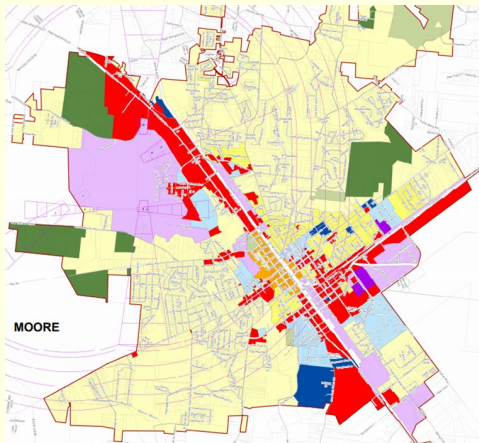
Contact Senior Planner,
Mary Samaniego
Msamaniego@tullahomatn.gov

931-455-2282



What is Zoning?

Zoning refers to municipal laws that govern how real property can and cannot be used in certain geographic areas. For example, some of the property zones are residential, commercial and industrial. The Tullahoma Zoning Ordinance lists each use that is allowed in each zone to protect the health, safety and general welfare of the city.



Tullahoma Zoning Map

The Zoning Ordinance and Map can be referenced at
<https://www.tullahomatan.gov/planning-and-zoning>